

# Maker Faire® Burlington

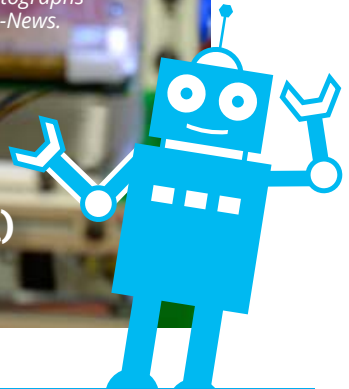
Saturday  
April 22  
2017



## 6th Annual Bigger & Better than Ever!

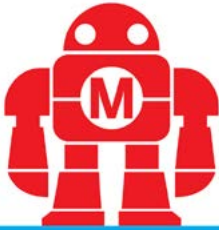
*Young student enthralled by a home-made 3D printer  
at the 2013 BMMF. This and other photographs  
by Scott Muthersbaugh of the Times-News.*

Greatest Show (and Tell)  
in North Carolina



Sponsorship Opportunities

# About Maker Faire



**Maker Faire**

## WHAT IS MAKER FAIRE?

Maker Faire is the Greatest Show (and Tell) on Earth—a family-friendly showcase of invention, creativity and resourcefulness, and a celebration of the Maker movement. It's a place where people show what they are making, and share what they are learning.

Makers range from tech enthusiasts to crafters to homesteaders to scientists to garage tinkerers. They are of all ages and backgrounds. The aim of Maker Faire is to entertain, inform, connect and grow this community.

The original Maker Faire was held in San Mateo, CA in 2005 and today there are over 150 smaller Mini Maker Faire events world wide with an estimated audience of 1.5 million people.

Alamance Makers Guild and other community partners have produced Burlington Mini Maker Faire annually since 2012.

**Beyond the Mini.** Burlington makers have been working hard since then and it has paid off. The originators of Maker Faire, Make Magazine have elevated the title of the faire by taking away "Mini" from the name.

**Burlington is now **MAKER FAIRE BURLINGTON** and proud to be home to the oldest and largest Maker Faire event in North Carolina!**

**A mixture of  
County Fair &  
World's Fair  
focused on  
local creativity.**



# About Maker Faire Burlington

## BURLINGTON IS A MAKER CITY

**Burlington NC has a long history of “making” through the railroads, textiles, schools, and manufacturing.**

Moving into the 21st century we are growing and changing to meet the needs of a new economy by highlighting more STEAM (Science, Technology, Engineering, Art and Math) skills and fostering a spirit of creativity and a life-long-love-of-learning.

**Maker Faire Burlington** is a family-friendly day of fun, excitement, and inspiration as local and regional NC makers, educators, students, and small businesses come together to share their ideas, inventions, and get hands-on with new technologies like 3D printing, laser cutting and engraving, CNC machining, as well as traditional skills and crafts such as woodworking, blacksmithing, and textiles. There is something for everyone, every age, every interest!



## EVENT HISTORY

### First BMMF event held in 2012

- 25 Exhibits (40 Exhibitors)
- 1,200 Attendees

### Fifth BMMF held in 2016

- 100 Exhibits (300 exhibitors)
- 4,800 attendees
- Mission to Mars exhibits
- Lunar materials from the Apollo Missions on Display!
- FPV (Drone) Racing
- Participation by Elon, Duke, UNC Universities.
- Steampunk Art Village

### 2017 Maker Faire Burlington Goals Make to Grow!

- Theme is “Make to Grow” and celebrates all things green. From beekeeping, agriculture and green energy, to biodiesel, dirt-to-shirt textiles and green STEM education.
- 5,000 + attendees
- 100+ Exhibits
- Event stage for digital and acoustic music performances and maker presentations.

## PROFILE OF ATTENDEES

- People come from around the state and beyond to see **Maker Faire Burlington** in part because it is on a master list produced by Make Magazine. Approx. 1/2 of attendees are local to Alamance County and 1/2 are from the surrounding regions of NC (Triangle, Triad) with some coming as far away as other states to see the Maker Faire.
- A little over 1/2 of our attendees are families of 3 or more.
- Attendees range in age from young children to retirees.
- Cross section of interests, skills, educational achievement. Creative folks.

## REACH

- Maker Faire Burlington is produced by Alamance Makers Guild, an educational community organization of Makers. For over five years Alamance Makers Guild has held over 160 public facing events with an ever growing attendance. Events range from activities and talks at local schools to our monthly meetings with attendance by 50 people each, to large events like Maker Faire and Burlington's Maker Takeover.
- The Event venue, Holly Hill Mall, places radio advertisements for the Maker Faire to 8 stations around the Triangle and Piedmont and via social media.
- Media coverage includes The Times News of Burlington, WGHP Fox 8 News, and the Triad Business Journal and PBS television.

## SUPPORT MAKER FAIRE BURLINGTON!

- This event is free to the public and relies upon sponsorship, donations, grants, and in-kind support from local and surrounding organizations.
- Past sponsors include ShopBot Tools, Epilog Laser, Hangar 18 Hobbies, STEAM Junction Makerspace, Alamance Arts, Elon University and more!
- Current 2017 sponsors to date include Radio Shack and Barnes & Noble

*Proud to be part of*



*(2012-2017)*

[ncsciencefestival.org](http://ncsciencefestival.org)



## COMMUNITY COMING TOGETHER AROUND MAKING

### Near Space Balloon Launch from the 2015 Burlington Mini Maker Faire by Blessed Sacrament School of Burlington

Students launched, tracked, recovered, and analyzed data from tandem hydrogen-filled near-space balloons that were launched to 89,000 feet (three times higher than commercial jets), where they took photos and video of the curvature of the earth from near space. Balloons were recovered after they landed 135 miles away in Tarboro, NC. With the help of Alamance Makers Guild, Palmer Generator, NC Near Space Research and others, the school accomplished this mission and even went on to win 3rd place in the Global Space Balloon Challenge for their documentary about the launch.



### Chapel Hill as Maker City

The City of Chapel Hill, NC sent a representative from the city's Economic Development Office to the 2016 Alamance County Maker Roundtable event, a yearly meeting made up of public and private organizations supporting the Maker Movement in Alamance County. After this meeting they decided that Chapel Hill should follow Burlington's Lead and try to adopt the Maker Movement for their city.

## About Alamance Makers Guild



A 21st century organization focused on making Alamance County, North Carolina a better and more attractive place through a shared joy of making things (*technical to artistic, traditional to digitally fabricated, solid to virtual*), learning and teaching, and creating opportunities for people from youth to retirees.

### **STEAM: Science - Technology - Engineering - Arts - Math >>**

Promote STEM education and skills with the addition of the 'A' for Arts to make STEAM.

**Jobs >>** Work to help people start small maker businesses and create an environment attractive to new manufacturing jobs for Alamance County.

**Community >>** Alamance Makers Guild hosts monthly open meetings that are free and open to the public and include a speaker, demonstration, or activity. We also produce the annual Maker Faire Burlington with the help of our members and volunteers.



# Why Sponsor Maker Faire Burlington?

**Maker Faire®  
Burlington**



## **GAIN EXPOSURE TO A TARGETED AUDIENCE BY SPONSORING MAKER FAIRE BURLINGTON.**

**Your sponsorship is good for the community and your organization!**

- Promote your business or organization in front of the **THOUSANDS OF ATTENDEES** at the Maker Faire with a live exhibit. (Interactive displays work best, ask us for ideas!).
- We will **PUBLICIZE YOUR ORGANIZATION** through our extensive social media network prior to and during the event. We expect local media to also cover the event, so your company may get **EVEN MORE EXPOSURE** in those stories.
- You will **FEEL GOOD ABOUT YOURSELF AND COMMUNITY**. You will be helping local people make connections, get leads on jobs, create inventions and businesses. Plus, you will be supporting teachers and students.

**Maker Faire Burlington is one of the largest and fastest growing events in our county and region.**



*Social* >>>>

*Web* >>>>

*Maker Faire Burlington  
is produced by  
Alamance Makers Guild*

**Stay Connected!**



**Alamance Makers Guild**




**Maker Faire Burlington**

**[www.AlamanceMakers.org](http://www.AlamanceMakers.org)**

**[www.Burlington.MakerFaire.com](http://www.Burlington.MakerFaire.com)**

# 2017 Sponsorship Opportunities

## Maker Faire® Burlington



SPONSOR BENEFIT	ENTHUSIAST \$10-249	APPRENTICE \$250-499	CRAFTSMAN \$500-999	MASTER MAKER \$1,000- 2,500
Tee Shirt			Logo	Logo Top Billing
Press Releases	Text	Text	Logo	Logo Top Billing
Promotional Emails	Text	Text	Logo	Logo Top Billing
Printed Posters	Text	Logo	Logo	Logo Top Billing
Website	Text	Logo	Logo/Link	Logo/Link
Social Meda	Text	Logo	Logo	Logo
Event Prgram	Text	Text	Logo	Logo Top Billing

*In-kind donations will be acknowledged by various means based upon value and scope. We hold the right to apply benefits based as we see fit.*

**Email us with questions or for more info!**  
**Sponsors@AlamanceMakers.org**

*Make checks payable to Alamance Makers Guild.*

Alamance Makers Guild is fiscally supported by  
Alamance Arts Council as we are applying for our 501 (c) 3.  
Eligible for tax donations as applicable to nonprofit status.

# More Local Maker News

## NATION OF MAKERS

Burlington North Carolina has been recognized by the White House and the Manufacturing Alliance of Communities as a Maker City. Maker Faire Burlington is an important hub in our growing local and North Carolina Maker Ecosystem. We are also founding members of the new Nation of Makers initiative, a nation-wide non-profit organization that supports Makerspaces and promotes the growth and advancement of the Maker Movement.



### **Burlington, NC: Maker Community**

Burlington represented at the National Maker Faire 2016 as an example of a mid-sized Maker City. Representing bodies included: Alamance Makers Guild, STEAM Junction Makerspace, Alamance County Library System, Alamance Community College, Elon University Maker Hub, B.E. Jordan Elementary

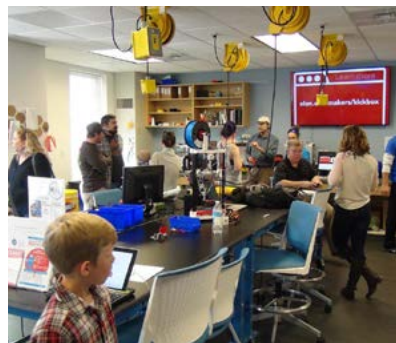
Makerspace, Graham Middle School Innovation Lab, Blessed Sacrament School of Burlington, The Burlington School Makerspaces and the City of Burlington as a Maker City.



*Linoleum Block Printing at 2016  
Burlington Mini Maker Faire*

## GROWTH OF LOCAL MAKERSPACES

- Center for Excellence for Mechatronics and expansions to CIM at ACC
- Elon University Maker Hub
- Graham Middle School's Innovation Lab Makerspace (impact Alamance grant)
- B.E. Jordan Elementary Makerspace
- STEAM Junction, downtown Burlington
- Blessed Sacrament School's STEM Certification at the Model Level + Maker Space



*MakerHub at Elon*